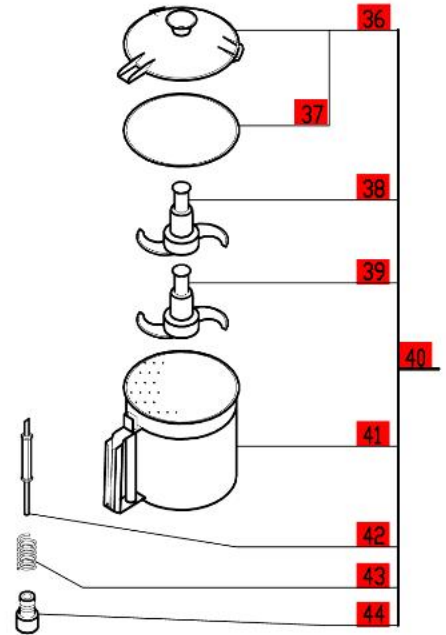
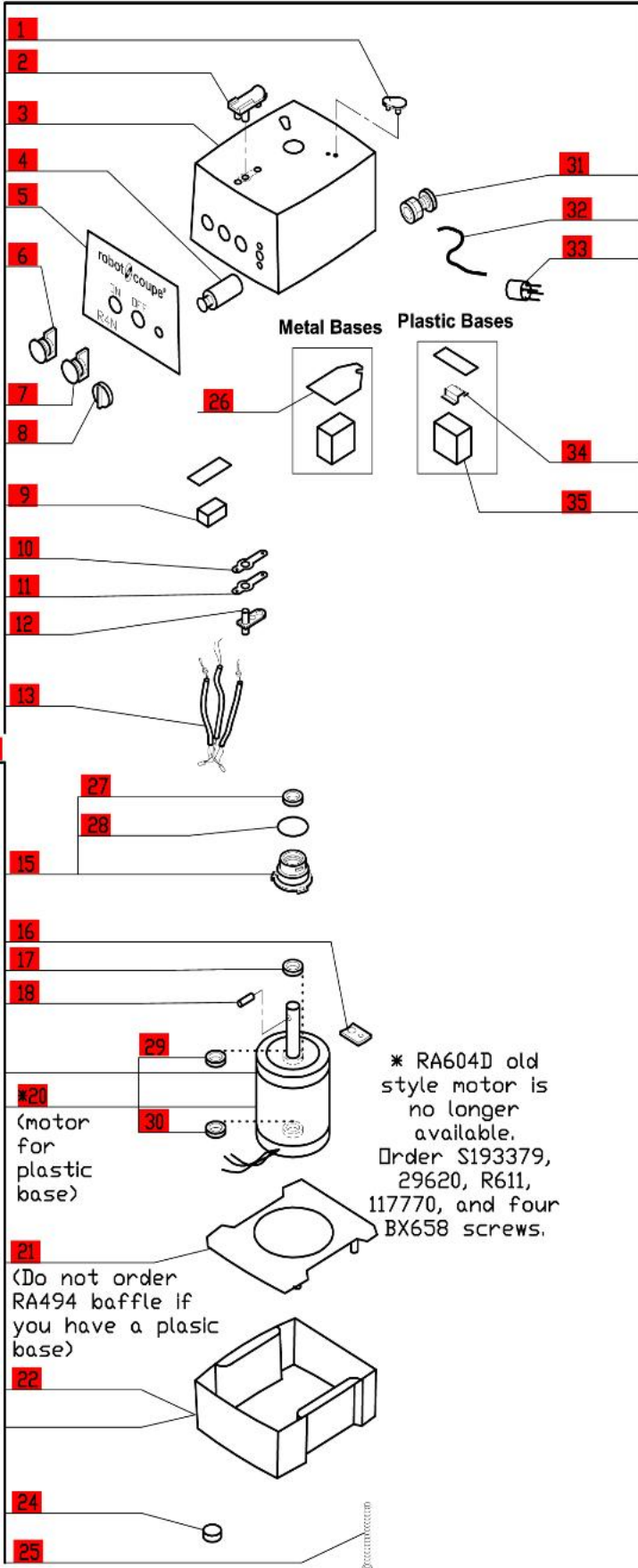
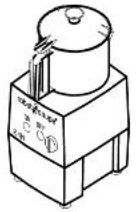


R4B Series D

Series D, Serial Numbers 232xxxxx13 (USA)
 and JA500A and above (Canadian)
 2- Speed, 208-240 Volt, 3 Phase, 60Hz., 1 HP.
 Low Speed-850 RPM, 2.6 Amps
 High Speed- 1725 RPM, 2.8 Amps
 Use **Series-D** Plates.



**Click on Red Dot
 OR
 Call us
 800-465-6060**

* RA604D old style motor is no longer available. Order S193379, 29620, R611, 117770, and four BX658 screws.

(motor for plastic base)

(Do not order RA494 baffle if you have a plastic base)

